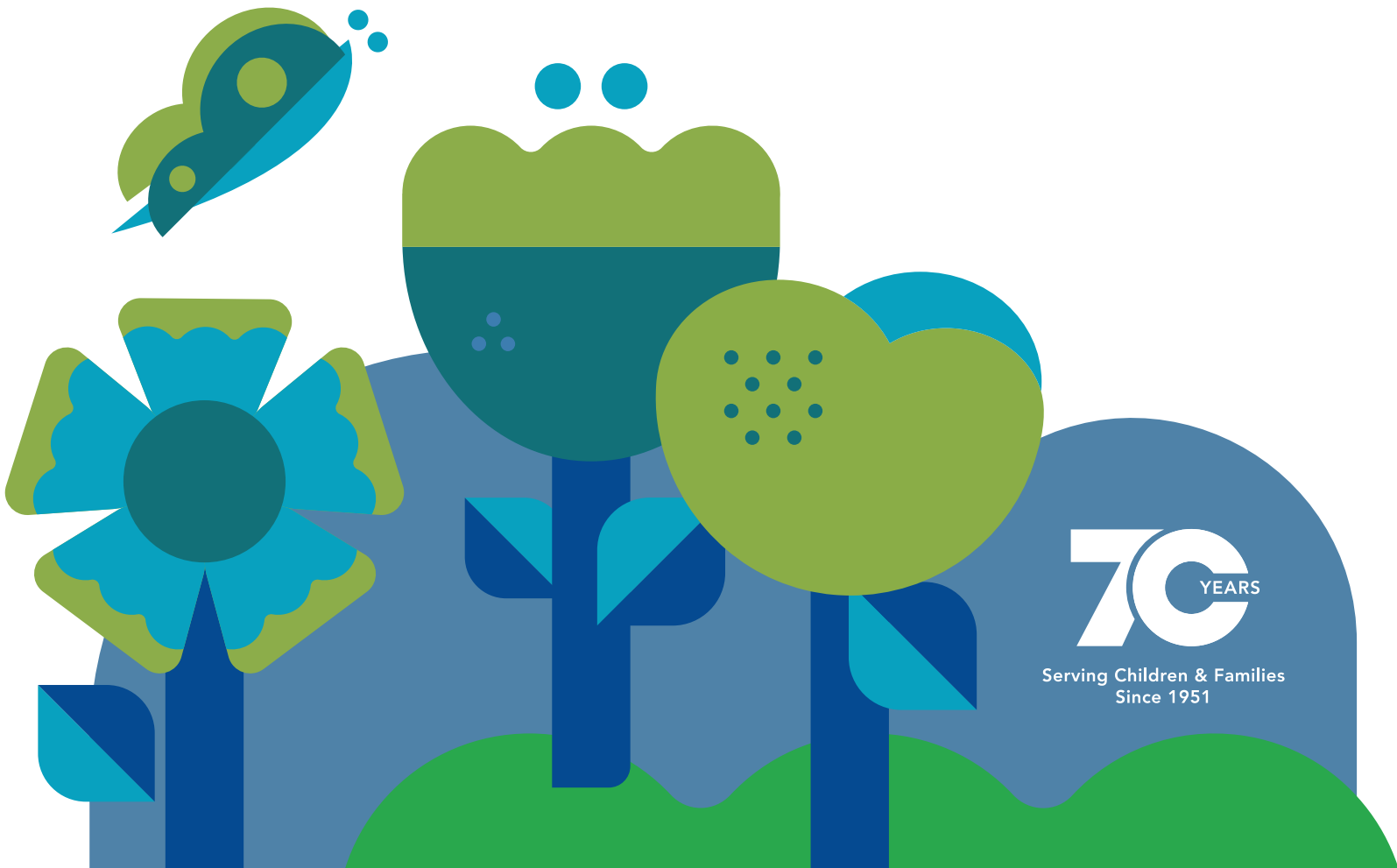




Hanna Perkins Center for Child Development

2021 Annual Report



Board of Directors & Staff

OFFICERS

President
John J. Potts, CPA

Vice President
Andrew Laytin

Secretary
Jordan M. Javier, MBA

Treasurer
Jack J. Nestor

Assistant Treasurer
Marc S. Newman, CPA

BOARD MEMBERS

Phyllis Brody
Camille Ho-A-Lim
Judith W. Holmes
Ludgy LaRochelle
Susan Y. Meisel, MS, RDN, LD, CDE
Michelle Mulchin
Jeffrey K. Orloff
Angela Owen
Dan Ratner, Psy.D.
Mary Reed
Jean B. Sarlson

ADVISORY COUNCIL

Malvin E. Bank*
Sam Chestnut
Michael Frantz
Maria L. Kaiser, MA
Roy E. Lachman
Tod Oliva
Zachary Paris
Susan Ratner
Georgianna T. Roberts, MA

* Deceased

ADMINISTRATIVE TEAM

Karen Baer, BS, MS, MHA
Chief Executive Officer

Kimberly Bell, PhD
Clinical Director

Jocelyn Benson
Office/Facility Manager

Brian Hester, MPA
Director of Finance and Human Resources
effective January 24, 2022

Stacey Kramer
Director of Finance and Human Resources
until December 22, 2021

Noelle Marotta, MA
Director of Education

Pamela Millar, BA
Director of Community Engagement
and School Programs

Bob Rosenbaum,
Communications & Marketing

Barbara U. Streeter, MS, LPCC
Consulting Analyst/Faculty Chair

Kate Vinciquerra, JD, MNO
Director of Development

HANNA PERKINS SCHOOL

Noelle Marotta, MA
Director of Education

Noreen Acierno, BS, Teacher

Bethany Bianco, BA, Apprentice Teacher

Laura Cyrocki, BS
Healthy Meals & Garden Program Manager

Brianna Koniar, BS, Teacher

Kirsten Radivoyevitch, MA, Program Facilitator

Ellen Ross, BA, Teacher

Elisabetta Superchi, MA, Teacher/Therapist

Fatemeh Toossi, MA, Teacher

HADDEN CLINIC AND SCHOOL SERVICES

Kimberly Bell, PhD
Clinical Director

Devra Adelstein, LISW-S

Anita M. Eddie, MA, ATR, MSSA, LISW-S

Phillip Emerson, MSW, LISW

Courtney Goldstein, MAT, LLPC
Clinic Associate

Beatrice Griffin, MSSA, LISW, BCD

Benjamin Lang, MSW
Apprentice Therapist

Kenna Mycek, MSW, LISW

Joanne Naegele, MA, LPCC

Judith Pitlick, MA, LPCC

Steve Silva, MSSA, LISW-S, LIDC

Barbara U. Streeter, MS, LPCC

Elisabetta Superchi, MA

Victoria Todd, MSSA

Belinda Torres, PhD

Margaret Zerba, PhD

COMMUNITY ENGAGEMENT SERVICES

Pamela Millar, BA
Director of Community Engagement
and School Programs

Devra Adelstein, LISW-S

Courtney Goldstein, MAT, LLPC

Rique Sollisch, BA

Judith Pitlick, MA, LPCC

Barbara U. Streeter, MS, LPCC

Victoria Todd, MSSA

CLEVELAND CHILD AND ADOLESCENT PSYCHOANALYTIC TRAINING PROGRAM

Barbara U. Streeter, MS, LPCC
Faculty Chair

CANDIDATES

Adrianna Crane, LCSW

Phillip Emerson, MSW, LISW

Betsy Iannuccillo, LCSW

Donna Lewen, MA LMHC

Taryn Ponsky, M.A., LPCC

Steve Silva, MSSA, LISW-S, LIDC

Belinda Torres, PhD

Raymond Troy, MD

FACULTY: COURSE IN CHILD/ ADOLESCENT PSYCHOANALYSIS- CLINICAL, THEORETICAL AND APPLIED

Devra Adelstein, LISW-S

Kimberly Bell, Ph.D.

Scott Dowling, MD

Beatrice Griffin, MSSA, LISW, BCD

Anna Janicki, MD

Kay McKenzie, MD

Joanne Naegele, MA, LPCC

Judith Pitlick, MA, LPCC

Barbara U. Streeter, MS, LPCC

Elisabetta Superchi, MA

Victoria Todd, MSSA

Margaret Zerba, PhD



Message from the Board President & CEO

Dear Friends,

Over the past year, we celebrated 70 years of Hanna Perkins by focusing on the critical challenges children face today and developing infrastructure to ensure access to Hanna Perkins services today, tomorrow and forever.

It's no surprise that we are seeing an increased need for our services. To meet it, we have added an apprentice therapist and apprentice teacher to build capacity in the clinic, school and community engagement division. We are developing new programming for teachers, parents and other front-line professionals.

Our staff is privileged to work with students at our local universities. We serve as Community Partner Champions for the Collaborative Practice 1 Course at Case Western Reserve University – an interdisciplinary graduate level course focusing on effective teamwork to solve problems in healthcare. Clinical Director Kimberly Bell, Ph.D., also teaches child development in the Department of Education at John Carroll University.

As our programs evolve, we want to stay true to the principles of the Hanna Perkins Way that are the touchstone for all our services. To that end, we have established a Psychoanalytic Advisory Committee to elevate discussions among the board, therapists and teachers.

Please take a few minutes to read about the exciting things happening at Hanna Perkins – none of which could happen without the generous support from you, our donors.



John Potts
Board President



Karen Baer
CEO



FAREWELL TO JOHN POTTS, BOARD PRESIDENT

On behalf of the HPC Board of Directors, staff and families we serve, I offer thanks and appreciation to John Potts for his service as Board President. Over the past four years he immersed himself in our mission and helped us grow. Under his leadership we implemented our new strategic plan, recruited new board members with subject matter expertise, and continued to provide services throughout the pandemic. It was also John who proposed reinventing our biannual benefit. The result, Harvest Homecoming, has become a wonderful evening under the big tent which will be celebrated for many years to come. ~ Karen Baer, CEO

About Hanna Perkins Center for Child Development

Early childhood is a short period that sets a lifelong foundation for learning, working, forming healthy relationships and enjoying life. **The Hanna Perkins Way** (see page 8) is our gentle and effective approach to working with children and families.

What we do: Founded in 1951, Hanna Perkins Center works with parents, educators and mental health professionals to support healthy social-emotional development during this important time.

What that means: That funny feeling in your stomach when you're doing something you know you shouldn't be doing? Or that overwhelming urge to throw something breakable when you're angry?

The ability to connect these feelings to their causes is a learned skill. Hanna Perkins helps children whose behavior indicates

they have feelings they don't understand. It helps parents to "decode" worrisome behaviors that could hold children back, so they're better equipped to help their children succeed.

Sometimes the behaviors are severe, but most often, they're normal developmental challenges – things like having trouble falling asleep, making friends, sitting still in class. Hanna Perkins helps children figure out why these things are difficult for them, empowering them to choose to behave differently, rather than simply acting on impulse.

Who we serve: Anybody from toddler through age 18. We often work with children who have experienced big things at home – like divorce, adoption or a close family member with a severe or extended illness.



Vision

A world where every child is listened to, understood and helped.

Mission

Early childhood experiences shape a person's entire life. To foster the emotional well-being of children and their families and to help them master life's challenges, The Hanna Perkins Center for Child Development promotes positive early learning experiences through educational and therapeutic services for children and parents; training and support for professionals; and community-wide collaborations.

Our services:

- **Hanna Perkins School:** Preschool, kindergarten, parent/toddler group, gardening programs and story time.
- **Hadden Clinic for Children and Families:** Treatment for children, adolescents and adults within the context of the whole family. We work with children who may be on medication to help with their behaviors, but we tend not to introduce it.
- **Educational workshops for parents.**
- **Extensive professional training** for teachers, social workers and others who work with children on a day-to-day basis.
- **Child psychoanalytic training** for professionals seeking certification in this therapeutic specialty.

Values

Respect: We respect the uniqueness of each child and the importance of the parent-child relationship.

Commitment: We are dedicated to an individualized approach for each child.

Psychoanalytic Understanding: We believe that all behavior has meaning and is motivated by unconscious and conscious factors. To fully understand a child we must learn about the child's inner thoughts and feelings, as well as the outer context in which the child lives.

Investment: We invest in every individual with the belief in their capacity to master life's challenges.

Empowerment: We work together to facilitate each child's growing independence. We provide the opportunity for children to become confident and capable at identifying and managing their feelings and actions.

Collaboration: We partner with families and professionals to continually problem-solve, learn and identify ways to support children's emotional growth.



Hanna Perkins School offers a unique approach to fostering development of emotional intelligence in children.

Our educational model is relationship-based. It focuses on deep trust between the teacher and child, and involves a unique learning partnership between each child, parent(s), teacher and a trained/credentialed child development specialist – known as a family helper.

This brings more expertise, resources, understanding and individualized attention to support each child's social-emotional growth.

This year Bethany Bianco joined us as an apprentice teacher in the kindergarten classroom – working as an integral member of the learning partnership while gaining experience in the psychoanalytic approach that's behind our highly regarded understanding of early childhood development.

The apprentice teacher program is an important part of our school. It increases our capacity, and provides a pipeline of engaged and motivated teachers with the specialized training our school requires.

And it does more than that. It has always been part of our mission to share what we learn about early childhood with teachers at other schools and learning centers. Our apprentice teachers take their knowledge with them and share it throughout their careers. They become teachers who change young lives for the better and influence their peers to do the same. It spreads the efficacy of the Hanna Perkins Way to children we may never know ourselves.



A small school that changes lives

In fiscal 2021, Hanna Perkins School provided:

- A full school year uninterrupted by pandemic
- Toddler, preschool and kindergarten classrooms for 23 students
- Ongoing parenting support and therapeutic services
- Observation environment for graduates and post-graduates in education and mental health

Training the Next Generation of Therapists

It takes a lot of work to become a therapist at Hanna Perkins Center for Child Development.

Typically, new therapists have basic knowledge but are required to work under supervision to earn their final licensure. After that, Hanna Perkins has expected therapists to gain an additional five years of clinical experience and begin training to become a certified analyst before joining our staff.

But analytic training is costly and intensive, and therapists in the early years of their practice already have educational loans to pay – representing major barriers for new therapists who are interested in building their competencies in psychodynamic work.

We realized that we needed to find another way to train early-career therapists in the *Hanna Perkins Way*.

In 2019, through a generous grant from The Abington Foundation, we created a 2-year Hadden Clinic Apprenticeship to engage in intensive on-the-job training as a child therapist specializing in psychodynamic forms of treatment.

Courtney Goldstein was the first apprentice therapist under this program, and she is now a clinic associate who sees children, adolescents and adults in the Hadden Clinic. She is also integral to our Community Engagement programs, which include approved professional development training for early childhood educators and social workers; consulting with early childcare centers; and *Closing the Gap* – a pilot program that provides support to improve the effectiveness of early learning centers in high-risk communities.

This year, through a generous gift from an anonymous donor, we welcome Benjamin Lang, MSW, as our second apprentice therapist. He is a candidate in the Child and Adolescent Psychoanalytic Psychotherapy Training Program at the Chicago Psychoanalytic Institute.

Lang is actively engaged in all aspects of working as a professional psychoanalytic therapist: seeing patients; participating in seminars; engaging in Prevention and Intervention Program meetings and consultation; observing our clinicians' work with children in schools in the community; attending HPC trainings; and preparing to work with our students through the Hadden Clinic.

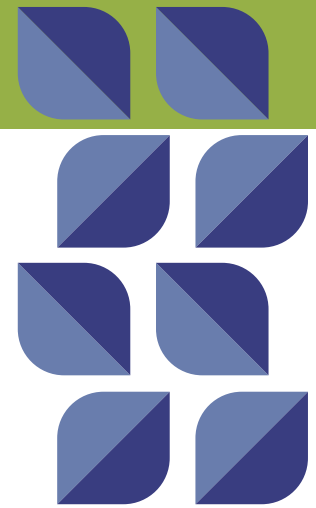


Meeting increased demand for mental healthcare

In fiscal 2021, the Hadden Clinic recorded:

- 1,808 patient visits
- 5 consecutive years of growth averaging 45% annually
- 5.5% cancellation rate vs. 20%+ industry standard

Community Engagement



Increasing Capacity for Care

When addressing the social emotional needs of children, HPC’s Community Engagement program takes vicarious therapy and a full-environment approach to a higher level.

Before the pandemic, young children were already critically underserved. Now, with rising rates of stress and depression, combined with the isolation of the pandemic, kids everywhere are in crisis.

But one-on-one therapy isn’t an option for every child, so we increase the availability of care by providing training and consultation to the early childhood educators and child care workers who see children every day. To that end, in 2022, we increased our program staff by more than 25 percent to meet rising demand for our services.

Yet the teachers and aides – Mr. Rogers sometimes referred to them as “the helpers” – are experiencing their own burn-out after more than two years of work under pandemic conditions. We need them to be healthy for the children they nurture every day, so we are creating new ways to support them.

Parents are also seeking help to navigate their children’s early years, and we’re creating programs for them. New offerings for parents include timely topics such as bullying and helping children understand the differences they see among people every day. We’ve had support from community partners such as the Cuyahoga County Public Libraries and the Stow-Munroe Falls Public Library to offer these programs across the region.

Throughout the pandemic, we also offered remote services by necessity, and they have been well-received. Even as the world continues to reopen, we’ll continue to offer online and remote service for those who need or choose it.

As part of that, we are transitioning our legacy training programs to an online learning platform where parents, educators, social workers and other professionals will soon be able to sign up and take our courses online at any time of day or night.

We believe the *Hanna Perkins Way* should be everywhere that children are. Through our Community Engagement programs, we are working to make that happen.

Supporting children, parents and professionals

In fiscal 2021, the Community Engagement Division offered:

- 43 different continuing education courses, including 6 new titles
- 83 Prevention and Intervention Program consultations at area schools
- Education and support to more than 2,400 children, parents, educators and social workers

The Hanna Perkins Way

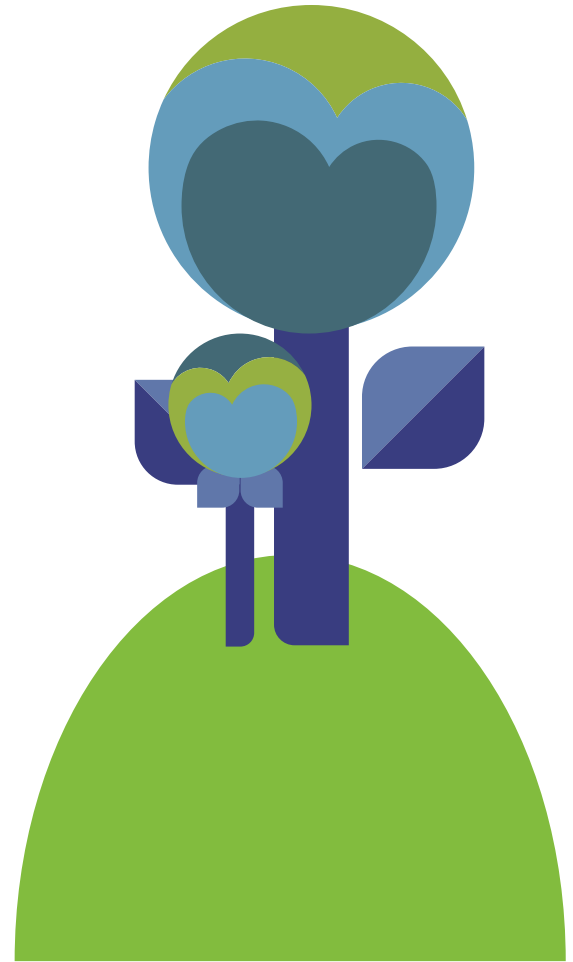
People who know Hanna Perkins are familiar with our gentle and effective approach to working with children and families.

Part of our culture since 1951, it's often referred to as The HP Way. It means:

- **We see each child** as a complete person with inner thoughts that need to be recognized and respected.
- **We understand behavior** as communication, providing a means to begin understanding a child's inner thoughts and needs.
- **We give voice to feelings** and thoughts, providing a basis for emotional mastery that is a foundation for success in school and life.
- **We take whatever time is needed** for a child to achieve this foundation of emotional intelligence.
- **We provide help** to support fruitful development and a lifetime of emotional wellbeing.
- **We involve family**, supporting parents in the hard work they do, and recognizing that members of a family are all interdependent.

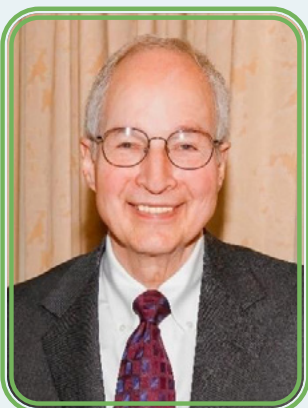
For some families, The HP Way provides a helpful resource. For others it's a lifeline. At Hanna Perkins, it is the heartbeat of everything we do.

For more detail and classroom examples of the Hanna Perkins Way, visit www.hannaperkins.org/the-hp-way/.



In memory of Malvin E. Bank

1930-2022



Hanna Perkins Center of Child Development mourns the loss and celebrates the legacy of Malvin E. Bank, who served first on the HPC Board of Directors and then our Advisory Committee until his death in April 2022. He was 91.

Bank was a lawyer with Thompson Hine, where he spent more than 50 years cultivating his reputation as an expert on tax-exempt organizations. Hanna Perkins was one of more than 50 agencies that he served over the years, providing thoughtful counsel on charitable trusts, donor-advised funds and other important aspects of sustaining a non-profit organization.

His behind-the-scenes work was vital in helping Hanna Perkins and others adapt to the evolving non-profit environment since the 1970s.

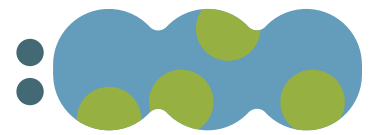
Along with Lea, his wife of 64 years, Bank was also a generous philanthropist, supporting the organizations he served as well as many others.

He was fond of sharing simple advice he got from his mother, "Always do the right thing." He tried diligently to live by that motto – treating people well and addressing them by name; avoiding sarcasm and jokes at another's expense; and never over-charging a client.

Bank was a devoted husband and father of four sons.



Emotional Intelligence Begins Here



A long-time board member recently shared an important and heartfelt story with us.

At the memorial service for her husband, their nephew volunteered to share memories of his uncle.

First, he asked of those in attendance, "Please be patient with me; I speak very slowly."

"Roger" held my attention. All eyes were on this self-confident, calm man, but in my own eyes I also saw the little boy who struggled without success to manage his behaviors and had been dismissed from numerous preschools.

Roger had been communicating through his extreme behaviors, and when he finally arrived at Hanna Perkins, his teachers, his family helper and his mother worked together to figure out what he was trying so hard to tell them.

Roger does not remember his kindergarten year at Hanna Perkins, but it is ingrained in him.

I remember the brilliant 5-year-old who seemed destined to be lost. Now I see a man who is happily married, a noted college professor and – most importantly – has a solid understanding of himself.

Hanna Perkins redirected the course of his life and saved his life.

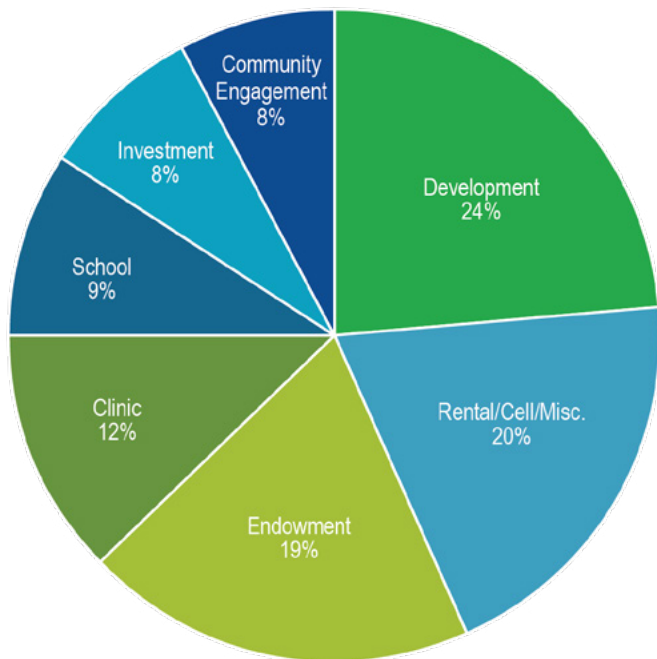


Alumni Network

Are you a Hanna Perkins alumnus or alumni family? We would be honored to know more about your Hanna Perkins story, and we want to reconnect with you. The alumni network has been established to support our current relationships with parents as their children move on to other schools, and to rekindle old relationships with those who benefited from their time with Hanna Perkins. Please join the network online at hannaperkins.org/alumni-network/. It's open to parents; adult former students; analytic candidates and trainees; past staff, board members and associates; and alumni of Malvern Elementary School. We also encourage you to stay connected through the Hanna Perkins Facebook group (facebook.com/groups/hannaperkins/).

Financials

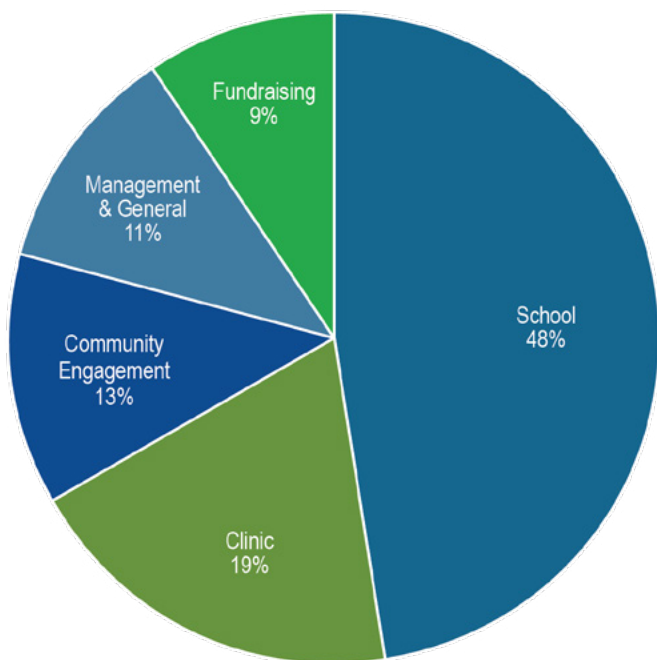
JULY 1, 2020–JUNE 30, 2021



REVENUE

Development	\$ 316,517
Rental/Cell Tower/Misc.	259,158
Endowment	258,002
Clinic	165,558
School	121,539
Investment	105,710
Community Engagement	<u>101,332</u>

TOTAL REVENUE **\$ 1,327,816**



EXPENSES

School	\$ 686,531
Clinic	278,340
Community Engagement	180,444
Management & General	162,054
Fundraising	<u>135,786</u>

TOTAL EXPENSES **\$ 1,443,155**

Hanna Perkins Center for Child Development is a 501(c)3 non-profit organization

Thank You To Our Annual Donors

FOUNDATION AND CORPORATE DONORS

Anonymous
The Abington Foundation
Bicknell Fund
Eva L. and Joseph M. Bruening Foundation
Cleveland Psychoanalytic Society Foundation
The George W. Codrington Charitable Foundation
William O. and Gertrude Lewis Frohring Foundation
Gateway Consultants Group, Inc.
Higley Fund of the Cleveland Foundation
Milton A. and Charlotte R. Kramer Charitable Foundation
The Laub Foundation
The MarketFarm
The Samuel H. and Maria Miller Foundation
David and Inez Myers Foundation, a supporting Foundation of the Jewish Federation of Cleveland
The Perkins Charitable Foundation
Richman Brothers Foundation
Select Equity Group, Inc.
Swamy Family Foundation
Tucker Ellis LLP
The Thomas H White Foundation
United Way of Greater Cleveland
Joshua R. Weil Search for Meaning Fund at the Cleveland Foundation

FOUNDERS' CIRCLE

Sheldon and Terry Adelman
Deborah and Benjamin Barnes
Dr. Emily Brewer
Pauline and Joseph Degenfelder
Susi and Peter Meisel
Sophia and Jack J. Nestor
Mary Reed and Paul Stanitz
Georgianna T. Roberts
Kim Sherwin
Mr. Kenneth E. Taylor
Mr. and Mrs. James Walker

FURMAN SOCIETY

Chandra and Manohar Daga
Laura and Christopher McKenna
Robin and Tod Oliva
Zack and Debby Paris
Karen and Dan Ratner
Susan and James Ratner
Nancy and Mark Ratner
Bob and Bethany Smith

KATAN SOCIETY

Phyllis Brody
Mr. and Mrs. William E. Conway
Pamela B. Davis and Jim Herget
Helge Staby Deaton
Cheryl and Paul Dube
Mary and Jeff Garrison
Michele S. and Roy E. Lachman
Candace and Ludgy LaRochelle
Celeste Myers
Jackie and Jeff Ponsky
Mr. John Potts and Ms. Renee Weiss
Mr. and Mrs. Albert B. Ratner
Sally and John Schulze
Katharine and Alexander Scovil
Astri Seidenfeld
Rique and James Sollisch
Kim and Randy Stewart
Mary Lane Sullivan

ENRICHMENT SOCIETY

Anonymous
Devra and David Adelstein
Karen and Butch Baer
Kathy Smith Baker
Douglas Banbury
Amy Georgalis
Ann and Robert Gillespie
Chas and Jen Grossman
Camille Ho-A-Lim
Judy and Peter Holmes
Rosalie and Steven Litt
Gayle E. Marshall, M.S.S.W.
John and Karen Nestor
Dr. and Mrs. Gosta Pettersson
Matt Ratner
Jean Sarlson
Sonni and Steve Senkfor
Michael Sherrill
Kenn and Laura Synek
The Turturici Family
Kate and Andy Vinciquerra

CHILDREN'S CHAMPION SOCIETY

Anonymous
Dr. B. James and Sarah Bennett
Nancy and George Blind
Dr. and Mrs. Norman A. Clemens
Richard R. Colbert
Dr. Herman Daldin
Dr. and Mrs. Nathaniel M. Donson
Doris A. Evans, M.D.
Jenifer B. Garfield
Dorinda Gershman
Clark Harvey and Holly Selvaggi
Nathan Hurle
Mr. Henri P. Junod, Jr.
Maria L. Kaiser
Karen and Doug Katz
Paul M. Katz and Lisa B. Arnsen
Lissa Kline and Steve Strang
John Kushleika and Chris Clavey
Mr. and Mrs. Arthur J. Lafave, Jr.
Andrew M. Laytin
Richard and Chris Lightbody
Lisa Meek and Marc Silverstein
Denise Messerman
Babu and Mala Nahata
Christine Nestor and Simon Demian
Michael Nestor and Doug Zullo
Marcia and Arthur Rosenbaum
Suzanne and Jonathan Scharfstein
Alfred Schrier
Holly Selvaggi and Clark Harvey
Belinda J. Torres, Ph.D.
Lorraine Weisman



HONOR ROLL SOCIETY

Anonymous
Abby and Tom Abelson
Dr. and Mrs. Christopher L. Adelman
Joann and Thomas Adler
Eleanor Hitchcock Anderson
Jim and Dreama Aveni
Mr. Mitchell Balk
Cynthia Bassett
Ms. Kristy Benz
Dr. William Bobowicz, Psy.D.
Brenda Bowie
Dr. Sandra Russ and Dr. Thomas C. Brugger
Dr. and Mrs. William E. Bruner
Marianne P. Carey and Paul Carey
Berch and Susan Carpenter
Lorraine Caruccio
George and Colleen Coakley
Dr. Michael and Janis Colman
Ms. Margaret M. Cowin
Ellen Chinn Curtis
Laura Cyrocki
Joseph DeLauro
Alice F. Dibble
Clare and J. Peter Ditchman
Drs. Scott and Donna Dowling
Catherine M. Dudley
Judy and Jeff Eakin
Sylvia Easley
Carrie Gladstone and David Edelman
Dawn and David Emerson
Mrs. Oliver Emerson
Leah and Jeffrey Epstein
Dr. and Mrs. Gerald Erenberg
Marsha and Chandler Everett
Kathryn and William Fehrenbach
Drs. John and Betsy Feighan
John V. Frank
Rose and Robert Gaier
Dr. Murray A. Goldstone
Drs. Nancy Wolf and Aric Greenfield
Sally and Bob Gries
Cassandra Haddock
Leigh and Eric Hall
Nancy Y. Hammond
Linda and Lawrence Hatch
Mrs. Henry R. Hatch III
Sunnie and Peter Hellman
Joan Horwitz
Mary Bourke Hughes and Daniel Hughes
Betsy and Dudley Humphrey
Hope Hungerford
Eleanor and H. Vaughn Irwin
Carlinne and Christopher Isabella
Dianne Javier
Linda and Robert Katz
Cathy Lipton Kaus
Marcia and Thomas Kilbane
Jean and Bill Koehler
Steven Kurland and Sandra B. Erlanger
Carol and Todd Kwait
Hal and Susan LaPine
Stephen and Bonnie Lau
Nancy Laytin
Morton and Judy Levin
Ms. Donna Lewen
Joanne M. Lewis
Dr. Jeffrey L. Longhofer
Leslie Short and Scott Looney
Kate B. Luzius
Gordon Maas and Maureen Harrington
Marques Martin
Lynda and Charlie Mayer
Ann McConnell
William C. McCoy
Patricia A. McCullough, Ph.D.
Thomas Meredith
Terrance Messerman
Don and Sally Messinger
Rita Montlack and Howard Freedman
Mr. Hunter Morrison
Michelle and Christopher Mulchin
Belleruth Naparstek
Linda and Ken Nickson
Roy G. Nyren
Nancy Cowan and David Paris
Michelle and David Paris
Carol Paull
Shari and Michael Perlmutter
Sharon and Patrick Perotti
Kim and Paul Pesses
Margo and Matthew Pokopac
Drs. Raymond Rackley and Carmen Fonseca
Kirsten and Tomas Radivoyevitch
Margaret and Richard Ransohoff
Ms. Tawny Ratner, A.B.P.P.
Mr. Richard L. Reppert and Ms. Jan DeHaven
Timmons Roberts and Holly Flood
Barb and Bob Rosenbaum
Enid and David Rosenberg
Yehudit and Mark Roth
Bill Rudman
Mr. Mark L. Sarlson
Suzanne A. Schneps
John D. Schubert
Audrey Schwebel
Betsy and Julian Seifter
Ms. Clara Sherwin
Barbara and Terry Shockey
Bernadette and Stephen Silva
Donald Silver, M.D.
Gretchen D. Smith
Ms. Jane H. Sommer, M.A.
Barbara and Stephen Somogyi
Sarah and Steven Stone
Barbara U. Streeter
Elizabeth Sullivan
Mr. Peter Sweeney and
The Honorable Kristin Sweeney
Beth and Jim Szpak
Edith and William Taft
Laura and Alan Tartakoff
Rahul and Rajani Tendulkar
Sara and Howard Tucker
Kathy and Jim Vinciguerra
Linda and Evan Vlaeminck
Peggy and Philip Wasserstrom
The Weidenthal Family
Meg and Sam Weingart
Carol and Yair Weinstock
Wells Fargo Community Support Campaign
Julie A. West
Danny and Lin Williams
Brooke and James Wolf
Nick and Sherri Wongchaowart
Dara and Alan Yanowitz
Patricia and John Zagara

All efforts have been made to assure the accuracy of this list; we apologize for any errors or omissions.
Gifts received between July 1, 2020–June 30, 2021

IN HONOR OF KAREN BAER

Kim and Randy Stewart

IN HONOR OF THE GRANDMOTHERS

Kathy Smith Baker

IN HONOR OF BURT AND BUNNY GRIFFIN

Carol and Todd Kwait

IN HONOR OF RUTH HALL

Lorraine Weisman

IN HONOR OF JUDY HOLMES

Judy and Jeff Eakin
Sunnie and Peter Hellman

IN HONOR OF MARIA KAISER

Kathy Smith Baker
Julie A. West

IN HONOR OF SUSI MEISEL

Mr. Henri P. Junod, Jr.
Steven Kurland and Sandra B. Erlanger
Kim and Paul Pesses
Audrey and Albert Ratner
Nancy and Mark Ratner
Tawny Ratner, A.B.P.P.
Drs. Nancy Wolf and Aric Greenfield
Dr. Jeffrey M. Yarus and Dr. Beth Schaberg
Peggy and Philip Wasserstrom

IN CELEBRATION OF STACEY NESHKIN

Amy Georgalis

IN APPRECIATION OF THE OLECH FAMILY

Catherine M. Dudley

IN HONOR OF TOD OLIVA

Jean and Bill Koehler

IN HONOR OF ZACHARY AND DEBORAH PARIS

Nancy Y. Hammond

IN HONOR OF GANN ROBERTS

Kathy Smith Baker
Doris A. Evans, M.D.
Jenifer B. Garfield
Hal* and Susan LaPine

IN HONOR OF JEAN SARLSON

Don and Sally Messinger
Mark L. Sarlson

IN HONOR OF BARBARA STREETER

Danny and Lin Williams

IN HONOR OF FATEMEH TOOSI

Bob and Bethany Smith

IN MEMORY OF ANNE BARNES

Eleanor Hitchcock Anderson
Deborah and Benjamin Barnes
Clara Sherwin
Edith and William Taft

IN MEMORY OF ELIZABETH DAUNTON

Dr. Emily Brewer
Dr. Herman Daldin

IN MEMORY OF BETTY FLEMING

Richard and Chris Lightbody

IN MEMORY OF ERNA AND ROBERT FURMAN

Dr. and Mrs. Norman A. Clemens
Gayle E. Marshall, M.S.S.W.

IN MEMORY OF LAINIE HADDEN

Mr. and Mrs. William E. Conway
Pauline and Joseph Degenfelder
Joseph DeLauro
Jenifer B. Garfield
Jean and William S. Kiser
Laura and Christopher McKenna
Susi and Peter Meisel
Dr. and Mrs. Gosta Pettersson
Jean Sarlson
Alfred Schrier
Elizabeth Sullivan
Mary Lane Sullivan

IN MEMORY OF FRANKLIN J. HRABAK

Margo and Matthew Pokopac

IN MEMORY OF JEAN KUSHLEIKA

Ann and Robert Gillespie

IN MEMORY OF MARILYN R. MACHLUP

Doris A. Evans, M.D.

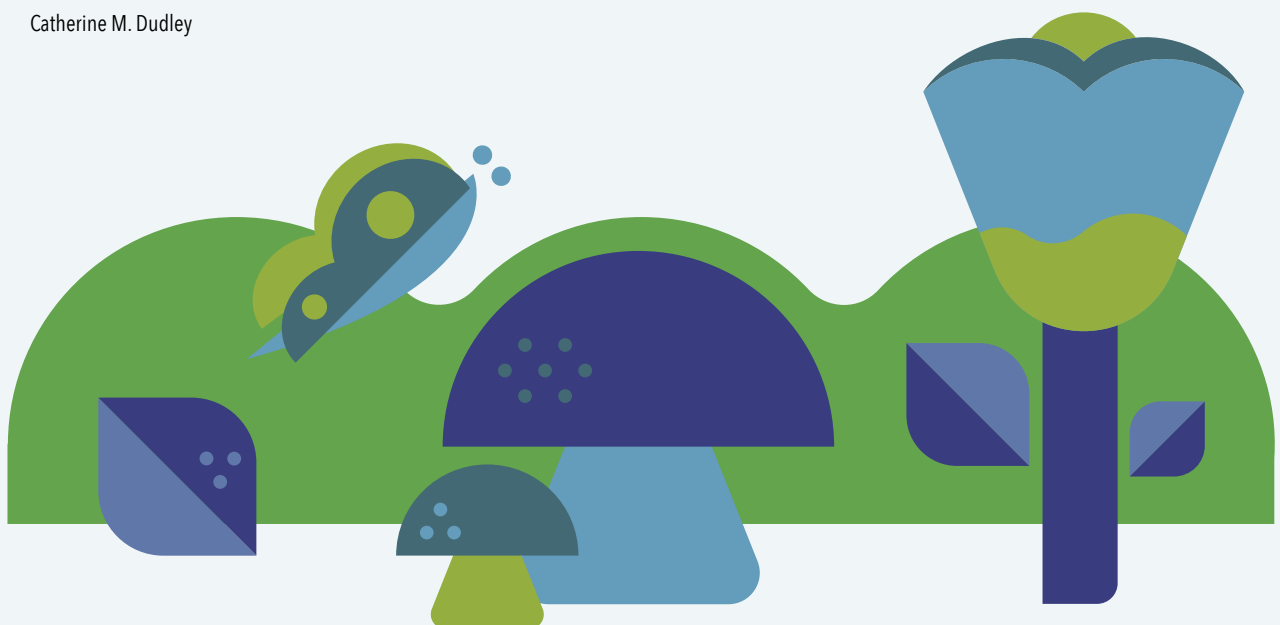
IN MEMORY OF NANCY NYREN

Roy G. Nyren

IN MEMORY OF DR. EDWARD SCHIFF

Dr. Emily Brewer

* Deceased





NUTURE

Sheldon and Terry Adelman

GROW

Karen and Butch Baer
The NRP Group
Walter Haverfield LLP

PATRON TABLES

Judy and Peter Holmes
Sophia and Jack J. Nestor
Katie and Jeremy Paris
Debby and Zack Paris
The Ponsky Family
Audrey G. and Albert B. Ratner
Karen and Dan Ratner
Mary Reed and Paul Stanitz

TABLE HOSTS

Phyllis Brody
Bunny and Burt Griffin
Susi and Peter Meisel
Belinda J. Torres, Ph.D.
John Potts and Renee Weiss
Dr. Lucene Wisniewski, CEBT Ohio

CLASSROOM RESOURCE SPONSOR

Michelle and Christopher Mulchin
Shaker Heights Development Corporation

COCKTAIL HOUR SPONSOR

CaroTrans International Inc.

RAFFLE SPONSOR

Streamline Communications Group LLC

SCHOLARSHIP DONORS

Anonymous
Sheldon and Terry Adelman
Karen and Butch Baer
Marc Benson
Phyllis Brody
Joan Dowling
Bonnie and Larry Frankel
Mary and Jeff Garrison
Gateway Consultants Group, Inc.
Bill Gill
Alexandra Hadden Hanna
Michelle and Evan Hirsch
Camille Ho-A-Lim
Lissa Kline and Steve Strang
Michelle and Mike Koniar
Stacy J. Langenderfer
Stephen and Bonnie Lau
Andrew M. Laytin
Morton and Judy Levin
Susi and Peter Meisel
Sophia and Jack J. Nestor
Linda and Ken Nickson
Barbara Notash
Zack and Debby Paris
Sharon and Patrick Perotti
Jackie and Jeff Ponsky
Drs. Todd and Diana Ponsky
Zachary and Taryn Ponsky
The Ratner Brothers and Families
Karen and Dan Ratner
Dr. Sandra Redmond
Mary Reed and Paul Stanitz
Susan Salkin
Lynn and Harlan Sands
Suzanne A. Schneps
Cathe Schwartz
Kim Sherwin
Gaylea and Brant Silvers
Sherry and Ron Soeder
Kim and Randy Stewart
Kelly and Greg Taylor
Tim Tramble
Kait and Ben Turshen
John N. Voyzey and Julia McGovern Voyzey
Mayor David Weiss

INDIVIDUAL DONORS

Anonymous
Dr. and Mrs. Christopher L. Adelman
Sheldon and Terry Adelman
Devra and David Adelstein
Karen and Butch Baer
Mitchell Balk

Allyson Becker
Marc Benson
Nancy and George Blind
Carrie Boland
Jeri E. Chaikin
Stephanie Citron and Dan Mermin
Dr. and Mrs. Norman A. Clemens
Deborah W. Cowan
The Crandall Family
Chandra and Manohar Daga
Helge Staby Deaton
Brenda S. Ellner
Doris A. Evans, M.D.
Jessica and Samuel Gangemi
Mary and Jeff Garrison
Bill Gill
Marietta Goodman
Drs. Nancy Wolf and Aric Greenfield
William M. Ondrey Gruber
Alexandra Hadden Hanna
Frank and Barbara Hanzlik
Linda and Lawrence Hatch
Sunnie and Peter Hellman
Michelle and Evan Hirsch
Camille Ho-A-Lim
Henry A. Holmes
Judy and Peter Holmes
Judy and Peter Holmes
Nancy and David Hubbert
Deb and Eric Hurwitz
Irene and Jordan Javier
Marilyn and Leonard Yarus Philanthropic Fund
Maria L. Kaiser
Lissa Kline and Steve Strang
Michelle and Mike Koniar
Stacey and Mike Kramer
Stacy J. Langenderfer
Candace and Ludgy LaRochelle
Andrew M. Laytin
Morton and Judy Levin
Richard and Chris Lightbody
Leslie Short and Scott Looney
Mr. and Mrs. Franklin Malemud
Paul Markowicz
Lynda and Charlie Mayer
Susi and Peter Meisel
Gale and Gerald Messerman
Keith Messerman
William Meyer
Sandra Middleton
Pamela A. Millar
Celeste Myers
Joanne Naegele
Sophia and Jack J. Nestor
Allison and Marc Newman

Linda and Ken Nickson
Betsy and Jeffrey K. Orloff
Christopher Owen
Helene and Aaron Paris
Sara Parks
Bella and Ketan Patel
Carol Paull
Judith Pitlick
Jackie and Jeff Ponsky
Zachary and Taryn Ponsky
Drs. Todd and Diana Ponsky
John Potts and Renee Weiss
Jessica Powell
Kristin and Austin Ratner
Audrey G. and Albert B. Ratner
Karen and Dan Ratner
Genevieve and Daniel Ratner
Dr. Sandra Redmond
Georgianna T. Roberts
Greg Romano
Marcia and Arthur Rosenbaum
Barb and Bob Rosenbaum
Enid and David Rosenberg
Steven and Ellen Ross
Ellen and Steven Ross
Mr. Phillip Rowland-Seymour
Pam and Theron Russell
Jacklynn Sadeghi

Lynn and Harlan Sands
Jean Sarlson
Sally and John Schulze
Julia V. Shelton
Barbara and Terry Shockey
Bernadette and Stephen Silva
Gaylea and Brant Silvers
Chaya and Roger Slain
Mary and Nathaniel T. Smith
Sherry and Ron Soeder
Rique and James Sollisch
Patricia Speese
Judy and Ron Stenta
Kim and Randy Stewart
Barbara U. Streeter
Elisabetta Superchi and John Delpaggio
Swamy Family Foundation
Steven Szilagyi and Jodi Kanter
Karen and Matt Tien
Victoria Todd and Ed McElhiney
Margot and Adie Tomer
Fatemeh Toossi
Tim Tramble
Sandy and Thomas Turner
Kait and Ben Turshen
Kate and Andy Vinciguerra
John N. Voyzey and Julia McGovern Voyzey
Andrea Warner and Richik Sarkar

Carol and Yair Weinstock
Lorraine Weisman
Mayor David Weiss
Dr. Leonard & Mrs. Sandra Weiss
Carole Wilson
Jan F. Witt-Comiono and David M. Comiono
Nick and Sherri Wongchaowart
Gary Yarus
Marilyn and Leonard Yarus Philanthropic Fund
Margaret Zerba

HARVEST HOMECOMING TRIBUTE GIFTS

IN MEMORY OF BETTY FLEMING
Rique and James Sollisch

IN HONOR OF SUSI MEISEL
Lindsay and Aaron Miller
Cuyahoga County Community College
Kyla and Mitchell Schneider
Marilyn and Leonard Yarus Philanthropic Fund

IN HONOR OF DEBBY AND ZACK PARIS
Nancy Cowan and David Paris

IN HONOR OF JOHN POTTS AND RENEE WEISS
Gina Beim and Marc Freeman

The Hanna Perkins Society

Recognizing the generosity of gift planning

We're pleased to invite you to join the Hanna Perkins Society, which honors individuals who include Hanna Perkins Center in their estate plans to provide for its financial future and security.

A legacy gift affirms your commitment to the children and families who need Hanna Perkins, it serves as inspiration to your family and community, and is a testament to the value of the Hanna Perkins Way.

Donors become members of the Hanna Perkins Society as soon as they make Hanna Perkins Center aware of their commitment.

With your permission, Hanna Perkins Society members will be acknowledged on the Hanna Perkins website, annual report and Society brochure. Of course, if you prefer, you may remain anonymous.

For more information about The Hanna Perkins Society, please contact:

Kate Vinciguerra
Director of Development

216.929.0198

kvinciguerra@hannaperkins.org



Harvest Homecoming Benefit

We had an amazing evening on Oct. 2, 2021; 200 friends of Hanna Perkins joined us under the tent with a number of others online.


We celebrated being together, we celebrated Hanna Perkins as our common cause, and we celebrated the Hanna Perkins School Teachers with presentation of the Hadden Award. These amazing women have nearly 200 combined years of service to Hanna Perkins. They have guided generations of children, and without a doubt they have changed the world.

It was an emotional night for many of us, especially for our co-chair Dan Ratner, who shared with us his own Hanna Perkins story, during which he told those gathered, "I am certain that Hanna Perkins saved our lives."

He continued, "Hanna Perkins is lighthouse for children. Cutting through the dark night of worry, fear, shame, despair, loneliness and confusion that often exists in the confines of our minds. Hanna Perkins shows us the way to solid ground. It was my lighthouse then, it is still is my lighthouse now."

On that night in October, donors like you helped raise \$227,000. This helps support Hanna Perkins School programs and services, so we can continue teaching children that each and every one of them is valuable just as they are.



 Hadden Award recipients, the Hanna Perkins School teachers (L to R):

-  Ellen Ross
-  Elisabetta Superchi
-  Barbara Streeter
-  Noreen Acierno
-  Laura Cyrocki
-  Fatemeh Toossi
-  Kirsten Radivoyevitch
-  Rique Sollisch
-  Noelle Marotta
-  Brianna Koniar



2021 HARVEST HOMECOMING COMMITTEE

CO-CHAIRS

Dan Ratner[°] and Renee Weiss

COMMITTEE

Karen Baer*
Judith W. Holmes[°]
Susan Y. Meisel[°]

Angela Owen[°]
Jeremy Paris
Taryn Ponsky

John Potts[°]
Kirsten Radivoyevitch*
Mary Reed[°]

Barb Rosenbaum
Richik Sarkar
Kate Vinciguerra*
Molly Machmer-Wessels

[°] denotes HPC Board Member, * denotes HPC Staff Member



**Hanna Perkins Center
for Child Development**

19910 Malvern Road
Shaker Heights, Ohio 44122-2823

hannaperkins.org

216-991-4472